

DC PUBLIC RESTROOM PILOT



WHY

The District has only one public restroom per 10,000 people. Many neighborhoods have no place to find relief. Reliance on retail for public amenities burdens local business and can exacerbate equity issues facing the District's diverse residents and visitors.



WHAT & WHERE

The District has taken steps to address this unmet need with the DC Public Restroom Pilot Program, which will place smart Throne restrooms across DC. The program will run from March through September 2024, with the potential to extend. The program has identified five priority areas for community input:

- Near Columbia Heights Plaza
- Near 8th & H NE
- Near Dupont Circle
- Within Downtown DC
- Within Oxon Run Park



HOW

The District and Throne are working with neighborhoods to place the smart data-driven bathrooms. Success will be determined based on key metrics including volume of use, cleanliness ratings from users and community feedback.



WHAT DO YOU
THINK?

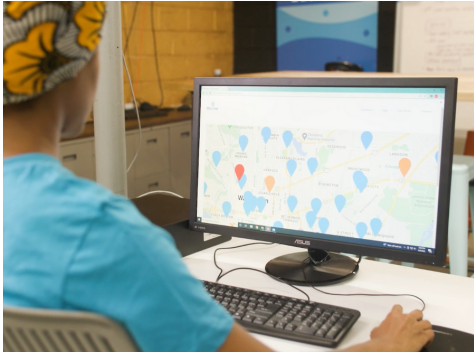


www.thronelabs.co/locationfeedback


throne

www.thronelabs.co
[@thronebathrooms](https://twitter.com/thronebathrooms)

ABOUT THRONE BATHROOMS

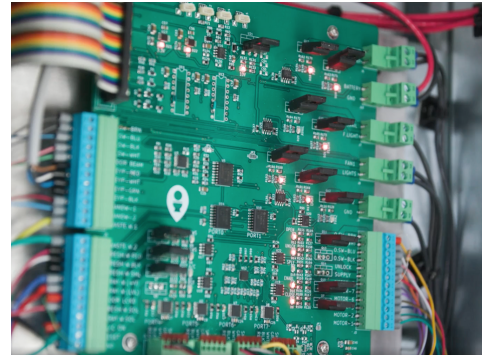


RESPONSIVE MAINTENANCE

Cleaning schedules for each Throne are based on data from 21 smart sensors and real time cleanliness ratings from users. When special attention is required at a location, Throne dispatches a team member to resolve the issue. Metrics such as uptime & average cleanliness ratings are tracked and shared transparently. If something's not right at a location, anyone can notify us using our clearly displayed support number.

TECH-ENABLED ACCOUNTABILITY

Throne uses behavioral science and smart technology to create accountability and deter loitering. Every use is associated with a unique user ID. Users that misuse Thrones receive warnings, and repeat offenders lose access. Throne's anti-loitering system limits use time to 10 minutes and communicates with bilingual signage and audiovisual cues. In the toughest downtown Los Angeles locations, 99.6% of users exit within 15 minutes, and only 0.07% of users overstay more than once.



ACCESSIBLE DESIGN

Throne's ADA-compliant design exceeds Federal standards and entry can be gained with a cell phone (smart or not) or Throne Tap Card. Throne works with public agencies and community organizations to distribute Tap Cards to those without access to a phone, while maintaining critical accountability features. All units have a baby changing station and some locations offer free menstrual products.

FLEXIBLE PLACEMENT & MOVES

Despite feeling like a really nice indoor bathroom, Thrones are portable. They can be delivered and operational within hours and can be moved just as easily. Thrones are completely self-contained, do not require access to water or sewer, and are powered by solar energy. These features enable Throne placements to be optimized based on the season, usage data, and community feedback



LOVABLE EXPERIENCE

Thrones have served more than 93,000 bathroom uses in the DMV and Los Angeles, with an overwhelmingly positive response. Whether at neighborhood parks or busy transit stations, surveys consistently find that between 88% and 93% of people "love" or "like" Thrones! User feedback indicates that people especially appreciate Throne's running water for handwashing and flush, its touchless fixtures, and reliable cleanliness.